



Product Catalog



FRIMSIN CHEMATO INDIA
PVT LTD

WORLD CLASS EPOXY FLOORINGS
AND WATER PROOFING
www.frimsinchematoindia.com

FRIMSIN SL-TC-20

SELF-LEVELLING EPOXY

TOP COAT

The FRIMSIN-SL-TC-20 floor Topcoat is a four-component epoxy floor Topcoat that exhibits high performance and gloss. It is ideal for use in industrial and commercial settings, producing a smooth, Self Levelling finish with multiple benefits. It can be applied over approved primers on concrete substrates.



Easy to clean



Glossy finish



Dust proof



High chemical resistance



High abrasion resistance



Antibacterial



Part-A, Part-B and Part-C

FRIMSIN ES-10

SELF-LEVELLING EPOXY UNDERLAY

The FRIMSIN-ES-10 Self-Leveling Epoxy Screed Underlay is designed to cover surface flaws and unevenness on concrete substrates by applying 1mm to 5mm of Self-Leveling Underlay. With its Self-Leveling, three component epoxy system, it offers an appropriate foundation for the use of Self-Leveling Top coats, which are layered between Primer and Top coat, is advised for concrete and masonry substrates as Primer, Screed, and Sealer since they have a very high compressive strength and abrasion resistance.



Easy to clean



Semi Glossy



Dust proof



High chemical resistance



High abrasion resistance



Part-A, Part-B and Part-C

FRIMSIN-EP-01

EPOXY PRIMER

The FRIMSIN-EP-01 clear primer/sealer is a low viscosity, two component epoxy-based product that is intended for use on masonry and concrete substrates. It provides good penetration and sealing of concrete floors. It sticks very well to concrete as well as other substrates used for top coats or underlays



Easy to clean



High chemical resistance



Wet Look



High abrasion resistance



Dust proof



Part-A, Part-B

FRIMSINFC-EC 30

HIGH BUILD EPOXY FLOOR COATING

The high-performance, Epoxy floor coating FC-EC-30 comes in coloured and non-pigmented varieties. It combines exceptional wear qualities with a decorative finish and chemical resistance. Perfect for applications requiring a seamless, joint-free finish floor and requiring the highest level of cleanliness. FC-EC-30 can be applied in a thickness range of 200–400 microns



Easy to clean



High chemical resistance



Glossy finish



High abrasion resistance



Dust proof



Antibacterial

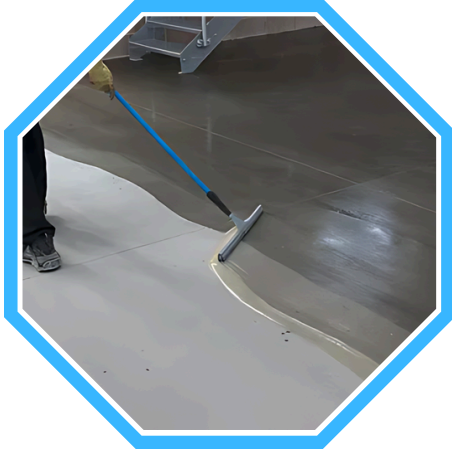


Part-A, Part-B and Part-C

FRIMSIN-BC-11

(CAR PARKING)

The FRIMSIN-BC-11 Base Coat (Car Parking System) is designed to cover surface flaws and unevenness on concrete substrates by applying 1mm to 5mm of base coat. It is a three component epoxy system, it offers an appropriate foundation for the use of Anti Skid Top Coats, which are layered between Primer and Top coat, is advised for concrete and masonry substrates as Primer, Screed, and Sealer since they have a very high compressive strength and abrasion resistance.



Easy to clean



High chemical resistance



Semi Glossy



High abrasion resistance



Dust proof



Part-A, Part-B and Part-C

FRIMSIN-AS-TC-21

ANTI SKID TOP COAT (CAR PARKING)

The FRIMSIN-AS-TC-21 floor Topcoat (Anti Skid TOP Coat) is a four component epoxy floor Topcoat that exhibits high performance .It is ideal for use in car parking system, producing a rough, Self-Levelling finish with multiple benefits. It can be applied over approved primers on concrete substrates



Easy to clean



High chemical resistance



Dust proof



High abrasion resistance

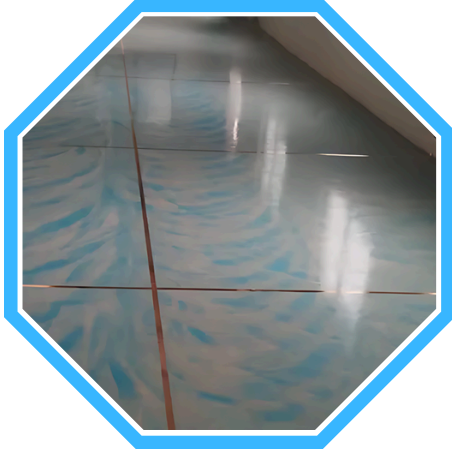


Part-A, Part-B and Part-C

FRIMSIN ESD SL TC-22

ESD SELF LEVELLING TOP COAT

The FRIMSIN-ESD SL TC-22 is a Electrostatic Discharge System of self leveling epoxy system. It is a three component Epoxy system and applied 1mm to 2mm of Epoxy top coat and It maintains constant level of conductivity



Easy to clean



High chemical resistance



Glossy finish



High abrasion resistance



Dust proof



Antibacterial

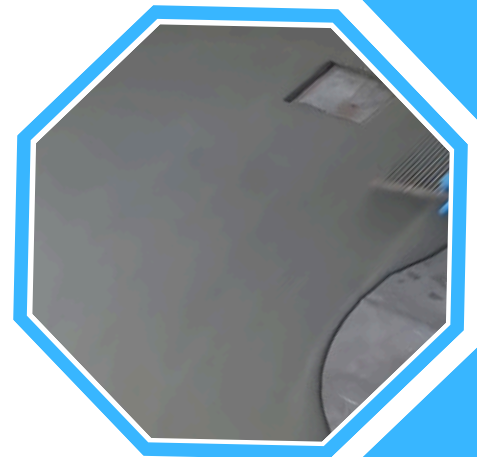


Part-A, Part-B and Part-C

FRIMSIN-SL-71

SELF LEVELLING AND SMOOTHING COMPOUND

High-quality synthetic resins, unique cements, and carefully chosen fillers are all included in FRIMSIN-SL-71 to create a mortar that flows freely and self-levels when combined with water. With its high coverage and material economy, the mixed mortar can be spread in single applications ranging from 3 mm to a maximum thickness of 10 mm while maintaining its free-flowing characteristics.





FRIMSIN-FC-51

SINGLE COMPONENT LIQUID WATERPROOF MEMBRANE

FC-51 is a ready-to-use, one component elastomeric waterproof membrane. A unique combination of copolymers and chemicals makes up FC-51, which is a waterproofing membrane that is smooth, flexible, and quick to dry.



Easy to clean



Dust proof



FRIMSIN-FC-WP-60

The acrylic polymer FC-WP-60 is composed of two components: a modified cementitious coating that comes in kits that are ready to mix. To achieve the desired texture, FC-WP-60 can be applied easily with a stiff brush, roller, spray, or trowel.



Easy to clean



Dust proof



Part-A, Part-B

FRIMSIN-FC-SBR-50

SBR BASED ADMIXTURE AND POLYMER BONDING AGENT

When applied to sand/cement composites, FC-SBR-50, a liquid polymer addition based on styrene-butadiene rubber, significantly boosts resistance to water penetration and enhances the abrasion resistance and durability.



Easy to clean



Dust proof



FRIMSIN-FC-HPW-70

ACRYLIC-MODIFIED FLEXIBLE

CEMENTITIOUS WATERPROOF COATING

The FC-HPW-70 waterproofing compound consists of two components that have been modified with acrylic. It has been specially designed with specific polymers to improve its water resistance and flexibility. Based on the most cutting-edge acrylic polymer technology, FC-HPW-70 completely resists re-emulsification.



Easy to clean



Dust proof



Part-A, Part-B

FRIMSIN-FC-WP-61

HIGH BUILD ACRYLIC WATERPROOF COATING

FRIMSIN FC WP 61 is a high build coating with an acrylic base that is designed to be used on both new and old roofs to provide weather resistance and waterproofing. Because of its elastomeric nature, the coating can contract and expand with the substrate to stop the formation of tiny cracks.





Clientele



AND MANY MORE.....



FRIMSIN CHEMATO INDIA PVT.LTD

WORLD CLASS EPOXY FLOORINGS AND WATER PROOFING

CONTACT US



Site no #8/C, 3rd Cross, Near BM Valley School Road, Pantharapalya, Mysore Road Bengaluru - 560 039

☎ 9632046836/ 9731301112

✉ frimsinchematoindia@gmail.com

🌐 www.frimsinchematoindia.com

📞 info@frimsinchematoindia.com

